

SUPA LITE PALLET

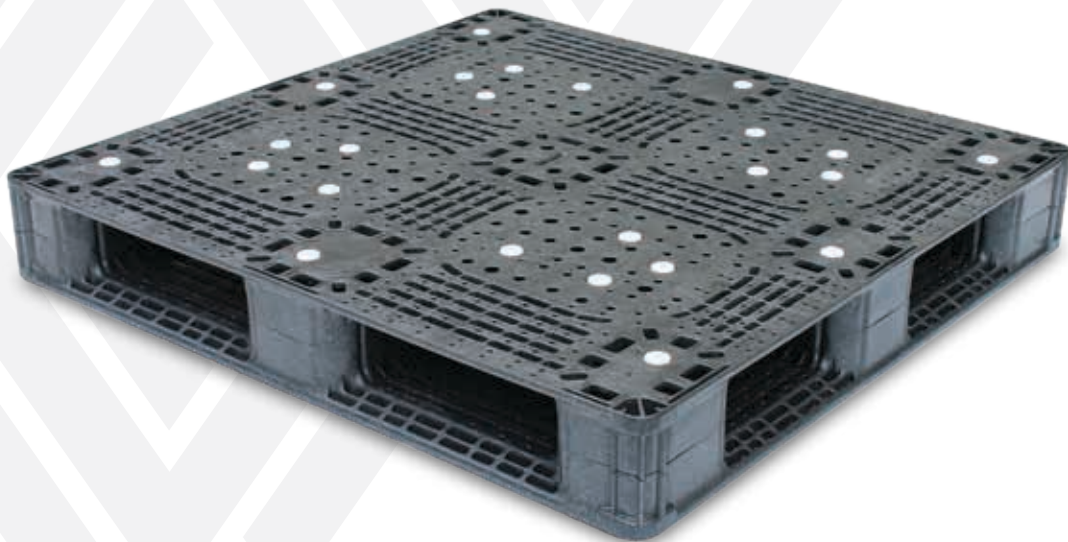


SUPA LITE

Specifications		Features
Description	Four way entry, non-rackable pallet	<ul style="list-style-type: none"> • Consistent: Every MCG plastic pallet has consistent 1200 mm x 1000 mm dimensions. • Light weight: Weighing 8 kg each, MCG pallets are significantly lighter than equivalent wooden pallets and more importantly do NOT increase in weight when wet. • Durable & Strong: MCG plastic pallets are manufactured from polypropylene in virgin or recycled material ensuring long life. • Recyclable: Our plastic pallets are 100% recyclable. • Safe: No protruding nails or broken boards to injure employees or damage equipment or products. • Hygienic: MCG pallets do not absorb liquids and are impervious to infestation and contamination. Do not need to be heated or chemically treated. • Note: Ideally suited for export pallets.
Length	1200 mm	
Width	1000 mm	
Height	120 mm	
Weight	8 kg	
Static Load	2000 kg	
Dynamic Load	1000 kg	
Material	Polypropylene	
RFID	Optional	



SUPA DUPA PALLET



SUPA DUPA

Specifications		Features
Description	Four way entry, rackable pallet	<ul style="list-style-type: none">• Consistent: Every plastic pallet has consistent 1200 mm x 1000 mm dimensions.• Heavy weight: Weighing 28 kg each. The pallets are significantly lighter than equivalent wooden pallets and more importantly do NOT increase in weight when wet.• Durable & Strong: The plastic pallets are manufactured from polyethylene in virgin or recycled material ensuring long life.• Recyclable: Our plastic pallets are 100% recyclable.• Safe: No protruding nails or broken boards to injure employees or damage equipment or products.• Hygienic: The pallets do not absorb liquids and are impervious to infestation and contamination. Do not need to be heated or chemically treated.
Length	1200 mm	
Width	1000 mm	
Height	150 mm	
Weight	28 kg	
Static Load	4500 kg	
Dynamic Load	1250 kg	
Racking Load	1250 kg	
Material	Polyethylene	