

# AGRICULTURE



**Fruit Drying Tray**

Specifications		Features
Length	905 mm	<ul style="list-style-type: none"><li>• Wood as a medium is highly frowned upon as it is highly conducive for the growth of fungus, which then in turn attacks the fruit.</li><li>• Fruit drying customers that were using wooden trays did not last long, were heavy to carry and heavier when wet.</li><li>• The biggest safety concern with the current wooden tray is that the steel nails start to rust, then break off and contaminate the fruit.</li><li>• The exporting of contaminated dried fruit also posed a problem as it failed to meet with international food requirements.</li><li>• MCG developed a plastic drying tray using food approved materials with chemical resistant additives, that protect the trays from degradation due to sulphur treatment during preservation.</li><li>• The trays do not absorb liquids and are impervious to infestation, contamination and are protected against UV radiation.</li><li>• Perforations along the entire base of the tray enhance increased air circulation.</li><li>• There are also two supporting poles, which fit onto the sides giving the tray rigidity and allowing ease of handling.</li><li>• This tray can also be used in drying tunnels, which would allow for drying fruit anytime during the year.</li></ul>
Width	900 mm	
Height	78 mm	
Weight	7 Kg	
Material	Polypropylene - virgin food grade	

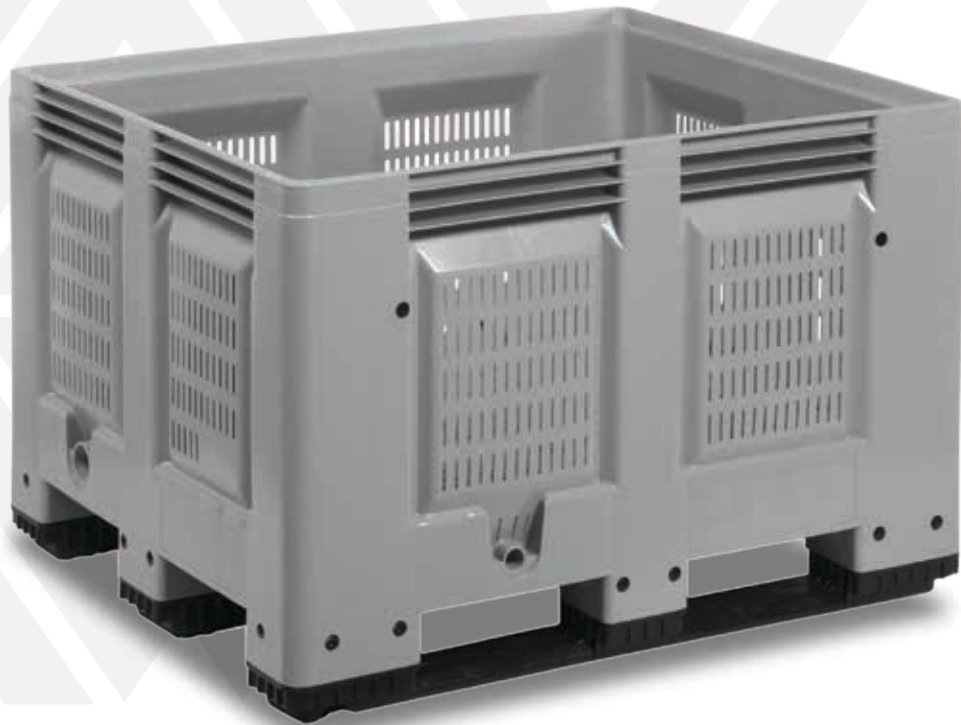
Gauteng: Tel: +27 (0)11 677 1200 • No. 2, 33rd Street, Malvern, Johannesburg

Cape Town: Tel: +27 (0)21 551 2310 • 16 Bolt Avenue, Montague Gardens

Windhoek: Tel: +264 (0)83 330 7340 • 12 Ruhr Street, Northern Industrial Area, Windhoek

To view more of our range visit [www.mcgindustries.com](http://www.mcgindustries.com)

# AGRICULTURE



## Schoeller Bulk Bin

Dimensions			Features
	<b>External</b>	<b>Internal</b>	The Bulk Bin provide significant advantages over traditional industrial packaging solutions, such as reduced weight, increased durability, improved hygiene, product protection, greater ergonomics, logistics efficiency, and compatibility with automated handling systems.
<b>Length</b>	1200 mm	1110 mm	
<b>Width</b>	1000 mm	910 mm	
<b>Height</b>	790 mm	610 mm	
<b>Weight</b>	45,5 kgs		For long-term storage and short-haul transport applications, the Bulk Bin offers you a strong, protective, smooth-walled container. It provides a unit load capacity up to 500 kg, and supports stacked loads of up to 4,5 tonnes, on a footprint as large as 1200 x 1000 mm.
<b>Material</b>	Polyethylene		
<b>Applications</b>			The double walls are flush and smooth on the outside and curved on the inside which facilitates cleaning. All four sides admit forklifts. The base can sit on skids, feet, or wheels. Numerous other features, accessories, and variants make this an enormously versatile container for the storage and handling of fruit and vegetables, as well as a variety of industrial applications.
<ul style="list-style-type: none"> <li>• Handling, storage, processing and distribution of fruit and vegetables.</li> <li>• This bin is also ideal for storage of a variety of industrial applications.</li> </ul>			